

Zhejiang Tianqi Electric Co., Ltd. was established in 1998, the registered capital of 11.68 million U.S. dollars. Foreign joint venture enterprise is a collection of R & D, production and sales of electrical equipment, and various types of chassis cabinets. The company headquarters is located in Anji County, Huzhou City, known for "ecological county, set up in Beijing, Shanghai, Guangzhou and marketing division. Production covers an area of 75,000 square meters and currently employs more than 400 people. The company has been established, has passed the ISO9001: 2008 quality management system certification, ISO14001: 2004 Environmental Management System Certification; access to U-L, I P 6 6, R O H S , T U V , C E , C B , C C C and other certificates.

The main products are:

Complete electrical :12-40 .5 KV High Voltage Switchgear, box-type substation AC low voltage switchgear, MCC motor control center.

Metal cabinet (material cold-rolled steel and stainless steel): wall-mounted cabinets, floor-to-ceiling cabinets, network cabinets, bus terminal box.

Plastic cabinet: waterproof plastic dust-proof junction box, sealed box, button box.

The company has advanced Germany imported laser cutting equipment, CNC machine tools, multifunctional molding equipment and sealing equipment; through the improvement of the production process, advanced detection technology, perfect after-sales service to provide quality products to customers at home and abroad. According to customer demand for design and production of special products to meet customer requirements. We always adhere to the "quality and development, to take the market to serve, integrity management, long-term contact and cooperation with the customer. The products are exported to Southeast Asia, Europe, America and other countries throughout the world.



## ZHEJIANG TIANQI ELECTRIC CO.,LTD.

Add: Tianzi Lake Industrial Zone, Gaoyu, Anji, Huzhou, Zhejiang, China  
TEL: +86-572-5815118 FAX: +86-572-5118861  
H.P.: (+86)17706726582 P.C.: 313310 Wechat: 17706726582  
E-mail: Sales@tibox.cn MSN: tjfirm@hotmail.com  
QQ E-mail: 2355376979@qq.com Website: [Http://www.tibox.cn](http://www.tibox.cn)

**TIBOX®**  
TIANGDI ELECTRIC

## Complete electrical switchgear



Complete electrical switchgear

Charge spots

PV combiner box

## MNS Low voltage Withdrawable Switchgear



MNS switchgear assembled by modular components, if is a combination of low-voltage switchgear withdraw-able type. It is used in the low voltage systems below 1200A that need highly reliable operation such as metallurgy petroleum chemical industries, mine enterprise, infra structures and so on.  
Executive Standard: IEC61439, GB7251.1

## MNS there are five different specifications of the drawer unit



85/4 drawer current to 32A  
200 (H) X150 (W) X400 (D)



85/2 drawer current to 63A  
200 (H) X300 (W) X400 (D)



8E drawer current to 250A  
200 (H) X800 (W) X400 (D)



16E drawer current to 250A  
450 (H) X600 (W) X400 (D)



24E drawer current to 630A  
600 (H) X800 (W) X400 (D)

## TECHNICAL DATA

	Rated Insulation Voltage (V)	660
	Rated Operating Voltage (V)	380
	Rated Impulse Withstand Voltage (V)	8000
	Overvoltage Category	III
	Degree of Pollution	3
	Rated Frequency (Hz)	50/60
Horizontal Busbars	Rated Current (A)	UP TO 5000
	Rated Peak Withstand Current (kA)	105/176/220
	Rated Short-time Withstand Current (kA)	50/80/100
Vertical Busbars	Rated Current (A)	630-1250A
	Rated Peak Withstand Current (kA)	40/105/176
	Rated Short-time Withstand Current (kA)	20/50/80
Dimensions	Recommended Height	2200
	Recommended Width	600,800,1000
	Recommended Depth	600,800,1000
	Degree of Protection	IP40,IP43,IP51,IP54

\* Customized design is available.





## GGD AC Low-voltage Power Distribution Cabinet



GGD is applied to power consumers of power plants, substations, industrial and mining enterprises and is used for electric energy conversion, distribution and control of power, lighting and power distribution equipment in power distribution system with AC 50Hz, rated operating voltage of 380V and rated operating current of 3,150A.

Executive Standard: GB7251.1, IEC61439

### MODEL

Model	Rated voltage(V)	Rated current(A)	Rated short circuit drop-out current(KA)	Rated short-time withstand current(I <sub>s</sub> )(KA)	Rated peak withstand current(KA)
GGD1	380	A 1000	15	15	30
	380	B 600(630)	15	15	30
	380	C 400	15	15	30
GGD2	380	A 1500(1600)	30	30	63
	380	B 1000	30	30	63
	380	C	/	/	/
GGD3	380	A 3150	50	50	105
	380	B 2500	50	50	105
	380	C 2000	50	50	105

### TECHNICAL DATA

Rated Insulation Voltage (V)		660
Rated Operating Voltage (V)		380
Assistant Circuit Rated Voltage (V)		380/220
Horizontal Busbars	Rated Current (A)	400/630/1000/1600/2000/2500/3150
	Rated Peak Withstand Current (kA)	15/30/50
	Rated Short-time Withstand Current (kA)	30/63/105
Degree of Protection		IP30

\* Customized design is available.

## MCC (Motor Control Centre)



Application: power distribution and motor control  
 Executive Standard: GB/T14048.1-2000,GB14048.4-2003,GB1048.5-2001,GB/T17626.4-2006,GB/T17626.5-2006,JB/T10736-2007

### TECHNICAL DATA

Ambient Temperature	-10°C~+55°C
Storage Temperature	-20°C~+65°C
Relative Humidity	5%~95% No frost
Sea-level Altitude	≤2500m
Degree of pollution	II
Degree of protection	IP20
Installation category	III



\* Customized design is available.

## GGJ low voltage reactive compensation device



GGJ widely used as power center and reactive power compensation in substations, factories, industrial and mining enterprises, large-scale power plants, oil, chemical companies, large steel mills, high-rise building.

## MODEL



## TECHNICAL DATA

Rated voltage	380V
Rated insulation voltage	680V
Rated frequency	50Hz
Compensation method	The combination of single-phase compensation and three-phase Compensation
Compensation capacity	420KVA~60KVA.
Protection degree	IP30

\* Customized design is available.

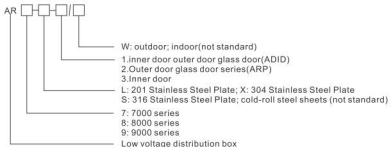
## AR Series Low Voltage Enclosed Distribution box



AR series low voltage enclosed distribution box is applied to AC500V, three-phase three-wire, three-phase four-wire and three-phase five-wire system.

Executive Standard: IEC61439,GB7251.1

### MODEL



### TECHNICAL DATA

Rated voltage of main circuit(V)	AC:380
Rated voltage of auxiliary circuit(V)	AC:220,380
Rated frequency(Hz)	50
Rated isolation voltage(V)	660
Rated current(A)	<1250

\* Customized design is available.

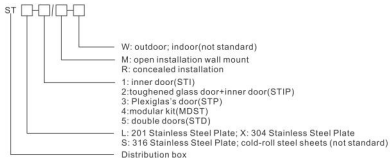
## ST Series Low Voltage Enclosed Control Box



ST series low voltage enclosed control box is applied to 50Hz, 660V, up to 225A three-phase three-wire, three-phase four-wire, three-phase five-wire system.

Executive Standard: IEC61439, GB7251.3

### MODEL



### TECHNICAL DATA

Rated working voltage(V)	AC:380 or AV:220
Maximum rated working current(A)	400
Rated insulation voltage(V)	400/660
Rated frequency (Hz)	50Hz , 60Hz
Protection degree	IP30 for complete set ; IP43 for enclosure
Short-time withstand current(KA)	6 , 15

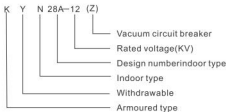
\* Customized design is available.

## KYN28A-12(Z) metal-clad AC removable enclosed switchgear



KYN28A-12(Z) switchgear is applicable for power receiving and distribution in the 3.6-12Kv three-phase AC 50Hz single bus bar and single bus bar sectioning system. It has the functions of controlling, protecting and monitoring the circuit.  
Existing certificate: GB3906 , GB/T11022 ,IEC62271-200

## MODEL



## TECHNICAL DATA

Rated voltage(KV)		3.6,7.2,12	
Rated frequency of circuit breaker(Hz)		50	
Rated current of circuit breaker (A)		630,1250,1600,2000,2500,3150,4000	
Rated current of switchgear(A)		630,1250,1600,2000,2500,3150,4000	
Rated short -time withstand current(KA/4s)		16,20,25,31.5,40,50	
Rated withstands current(peak)(KA)		40,50,63,80,100,25	
Rated short -circuit closing current(peak)(KA)		16,20,25,31.5,40,50	
Rated insulation level	1 min power frequency withstands voltage	Between poles,pole to earth(KV)	24,32,42
		Between open contacts(KV)	24,32,48
	Lightning impulse Withstands voltage(peak)	Between poles,pole to earth(KV)	40,60,75
		Between open contacts(KV)	46,70,85
Degree of Protection			Shell:IP4X;IP2X when the CPT and CB doors are open

\* Customized design is available.

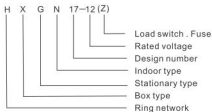
## HXGN17-12(F.R) box-type fixed AC metal-enclosed ring-network switchgear



HXGN17-12(F.R) switchgear is rated voltage 12KV, rated frequency 50HZ AC high voltage electrical equipment, mainly for three-phase AC ring network, terminal power distribution network and industrial power equipment, it is also suitable for the installation of box type substation.

Existing certificate: GB3906 , GB16926 , IEC6227-200 . IEC62271-105.

### MODEL



### TECHNICAL DATA

	Rated voltage(KV)	12
Rated current	Load break switchgear(A)	630
	Combined switchgear(A)	125
	Rated frequency(HZ)	50
	Rated short-circuit breaking current(KA)	31.5
	Rated short-time withstand current(KA)	20
	Rated active on-load breaking current(A)	630
	Rated peak withstand current(KA)	50
	Rated power frequency voltage withstands inter-phase , to earth and to the open contact(KV)	42/48
	Thundering withstands voltage inter-phase, to earth and to the open the contact(KV)	75/85
	Mechanical life(TIMES)	10000
	Rated take-over current(A)	3150
	Protection level(A)	IP2X
	Operating mode(A)	Manual or automatic
	Control circuit rated voltage(V)	AC220

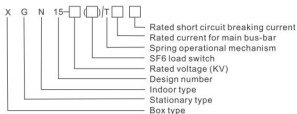
\* Customized design is available.

## XGN15-12 box-type fixed AC metal-enclosed switchgear



XGN15-12 switchgear is applied in the rated frequency 50HZ , rated voltage 12/24KV grid system . Its main components use the SF6 load switch . Also accept other global brands.  
Existing certificate: IEC62271-200, GB3906, GB3804, GB16926, GB/T11022 etc .

### MODEL



### TECHNICAL DATA

	Rated voltage(KV)	12
	Rated current of main bus bar	630
	Rated current of matched fuse	125
Rated insulation level	1 min power frequency withstands voltage(KV)	42/48
	Lightning impulse Withstands voltage(KV)	75/85
	Power frequency withstands of auxiliary circuit and control circuit(V)	2000
	Rated frequency(Hz)	50
	Rated short circuit making and breaking current (peak)(KA)	50125
	Rated short-time breaking current(KA)	50
	Rated withstands current of main circuit(KA/5)	20/3
	Rated withstand current of earthing circuit(KA/5)	20/2
	Rated voltage of control circuit(V)	DC:220 / AC:220
	Mechanical life(TIMES)	2000
	Protection degree	IP2X

\* Customized design is available.

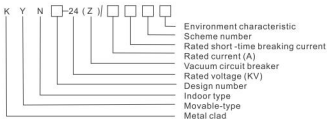
## KYN28A-24(Z) metal-clad AC removable enclosed switchgear



KYN28A-24(Z) switchgear is suitable for indoor three-phase 50/60 hz, rated voltage of 24 kv electric power systems, mainly used in power plant and substation. And high-rise buildings, industrial and mining enterprises as acceptance and distribution of electric energy and for detecting circuit control and protection.

Existing certificate: GB3606, IEC6227-200

## MODEL



## TECHNICAL DATA

Rated voltage(KV)	24
1min power frequency withstand voltage(KV)	(50)65
Rated impulse withstand voltage(peak)(KV)	125
Rated frequency(Hz)	50(60)
Rated current(A)	630/1250/1600/2000/2500/3150
Rated current for branch bar(A)	630/1250/1600/2000/2500
Rated short time withstand voltage current(KA)	16/20/25/31.5
Rated peak withstand current (KA)	40/50/63/80
Rated duration for short circuit(S)	4
Protection degree	IP4X for enclosure , IP2X for the opening door of compartment and breakers
Weight(Kg)	800 1000 (Rated current is above 1600A)

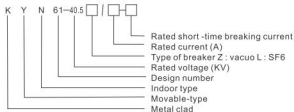
\* Customized design is available.

## KYN61-40.5 metal-clad AC removable enclosed switchgear



KYN61-40.5 switchgear is designed and developed by XI'an high voltage electrical research institute . It is suitable for use in system of 40.5KV , three-phase , AC , 50HZ , as an indoor distribution equipment to accept and distribute power, with function of circuit control, circuit protection and circuit detection. In addition to be suitable for general power system. Existing certificate: GB3906-2006 , GB/T11022-2011, DL/T404 .

## MODEL



## TECHNICAL DATA

Rated voltage(KV)	40.5	
Rated current(A)	400,630,800,1250,1600,2000	
Rated short circuit breaking current(KA)	25,31.5	
Rated short-circuit making current(KA)	63,80	
Rated moderate makeup current (peak)(KA)	63,80	
Rated short-circuit breaking current(effective value)(KA)	25,31.5	
Rated insulation level	Lightening impulse Withstands voltage(KV)	185
	1 min power frequency withstands voltage(KV)	95
Outline dimension (WXDXH)(mm)	1400x2800x2600	
Protection degree	IP3X/IP2X	

\* Customized design is available.

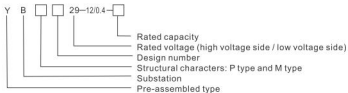
## YBM(P)29-12/0.4 high and low voltage pre-assembled substation



YBM(P)29-12/0.4 high and low voltage pre-assembled substation is a kind of compact power distribution device that integrates high voltage electrical devices, transformer, low voltage electrical devices together. It can be used in high-rise buildings, building in urban and rural areas, residential communities, high-tech development areas, small and medium size factories, mining areas, oil fields, temporary construction sites, and other premises.

Existing certificate: GB/T17467, SD320.

### MODEL



### TECHNICAL DATA

Item	High-voltage electric equipment	Transformer	Low-voltage Electric equipment
Rated voltage(KV)	7.2/12	6/0.4 10/0.4	0.4
Rated capacity(KVA)	200-630	M type:200-1250 P type:50-800	Max 2x1600
Rated current(A)	Load switch 400-630A		100-3000
Rated breaking current(A)	Combined electric equipment depend on the fuse		15-63
Rated short-time withstand current(KA)	20x(2) 12.5x(4)	200-400KVA 400KVA	15X1 30X1
Rated peak withstand current(KA)	31.5 50	200-400KVA 400KVA	30
Rated making current(KA)	31.5 50		63
Lightning impulse withstands voltage(KV)	Phase to ground 30/42	Oil immersed type 35	
	Separated fracture 34/48	Dry type 28	≤ 300V, 2
1min power frequency withstand voltage(KV)	Phase to ground 60/75	75	> 300V, 2.5KV
	Separated fracture 75/85	75	
Noise level(DB)		Oil immersed type-55 Dry type-65	
Protection degree		IP23D	

\* Customized design is available.